

# Charter Township of Flushing

6524 N. Seymour Rd

Flushing, MI 48433

[www.flushingtowship.com](http://www.flushingtowship.com)

Phone:810-659-0800 Fax: 810-659-4212

Supervisor Frederick Thorsby  
Clerk Wendy Meinburg  
Treasurer Terry Peck

**Trustees**  
William Bain  
Linda Minarik  
Sharilyn Willette  
Joshua Upleger

October 3, 2023

Resident of Beechtree Ln:

The Charter Township of Flushing has been contacted by residents in your subdivision regarding the cost of paving the subdivision. The Genesee County Road Commission was contacted and a new cost estimate was obtained from their engineers.

The PROJECT SUMMARY: HMA Surface Removal, New 3" Hot Mixed Asphalt, Joint Repair, Spot Curb & Gutter Repair and Drain Structure Reconstruct

LOCATION: Beech Tree Farms, Part of the SE 1/4, Section 34, T8N, R5E, Flushing Twp (Potter Rd Nearly to end of Beech Tree Lane)

TOTAL LENGTH: 0.36 miles

Beech Tree Lane (0.31 Mile)	\$290,000
Beech Tree Court (275 Feet)	\$ 60,000
Total Construction Estimate	\$350,000
Engineering & Inspection	\$ 87,500

TOTAL PROJECT COST ESTIMATE \$437,500

The Genesee County Road Commission (GCRC) will not charge for the Engineering and Inspection. Which brings the construction cost for the subdivision to \$350,000.

The GCRC has started a new program and will donate 10% of the cost, up to \$150,000 per project, if the township will match. This would bring the cost down to \$280,000

I would like to schedule a meeting, at the township hall, on October 12, at 6:00 pm with the residents to discuss this project further. Petitions will be available at this meeting.

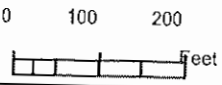
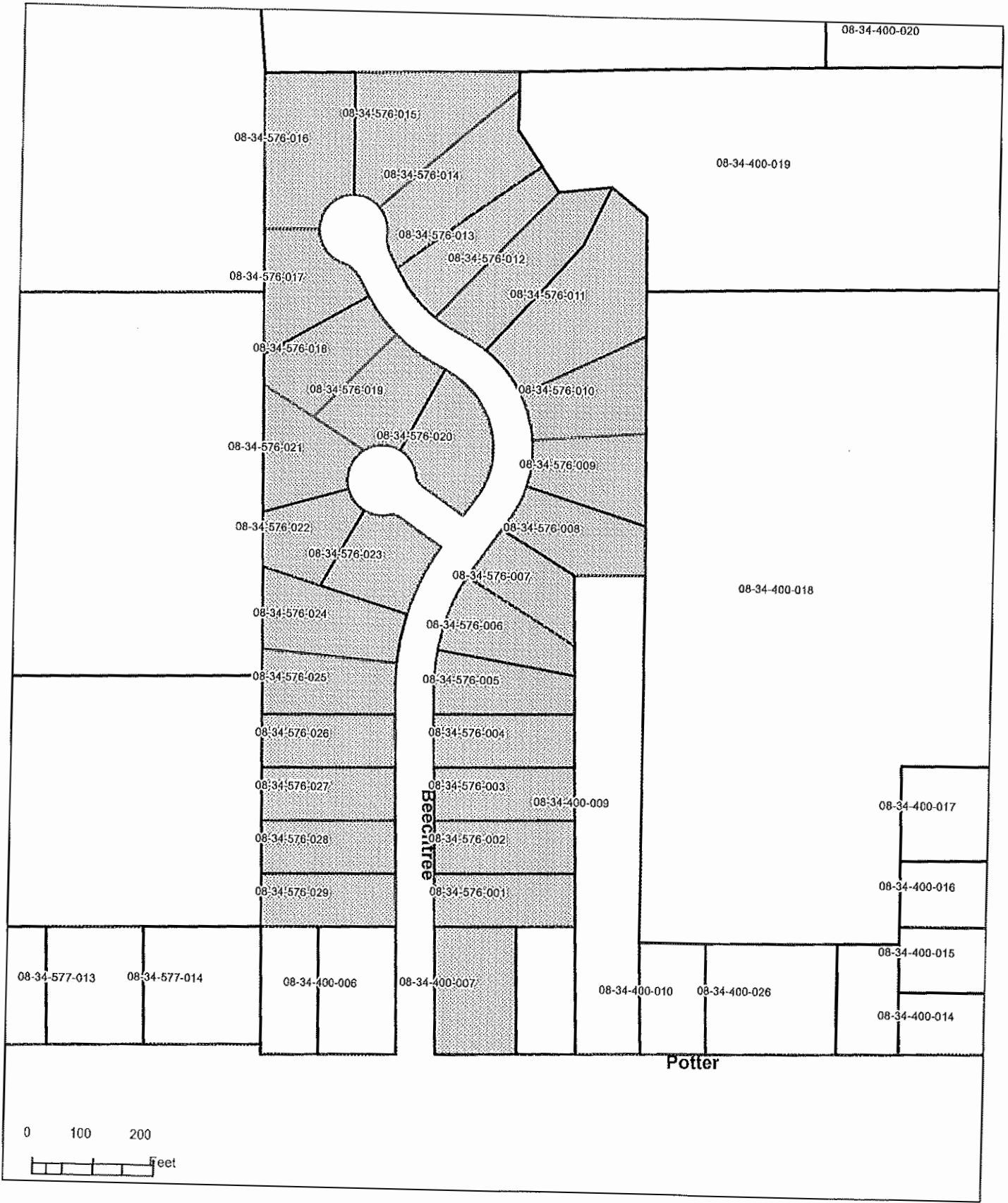
Thank You,

  
Frederick Thorsby

Supervisor

Office: 810-659-0800 ext 104

Cell: 810-247-8560



Potter